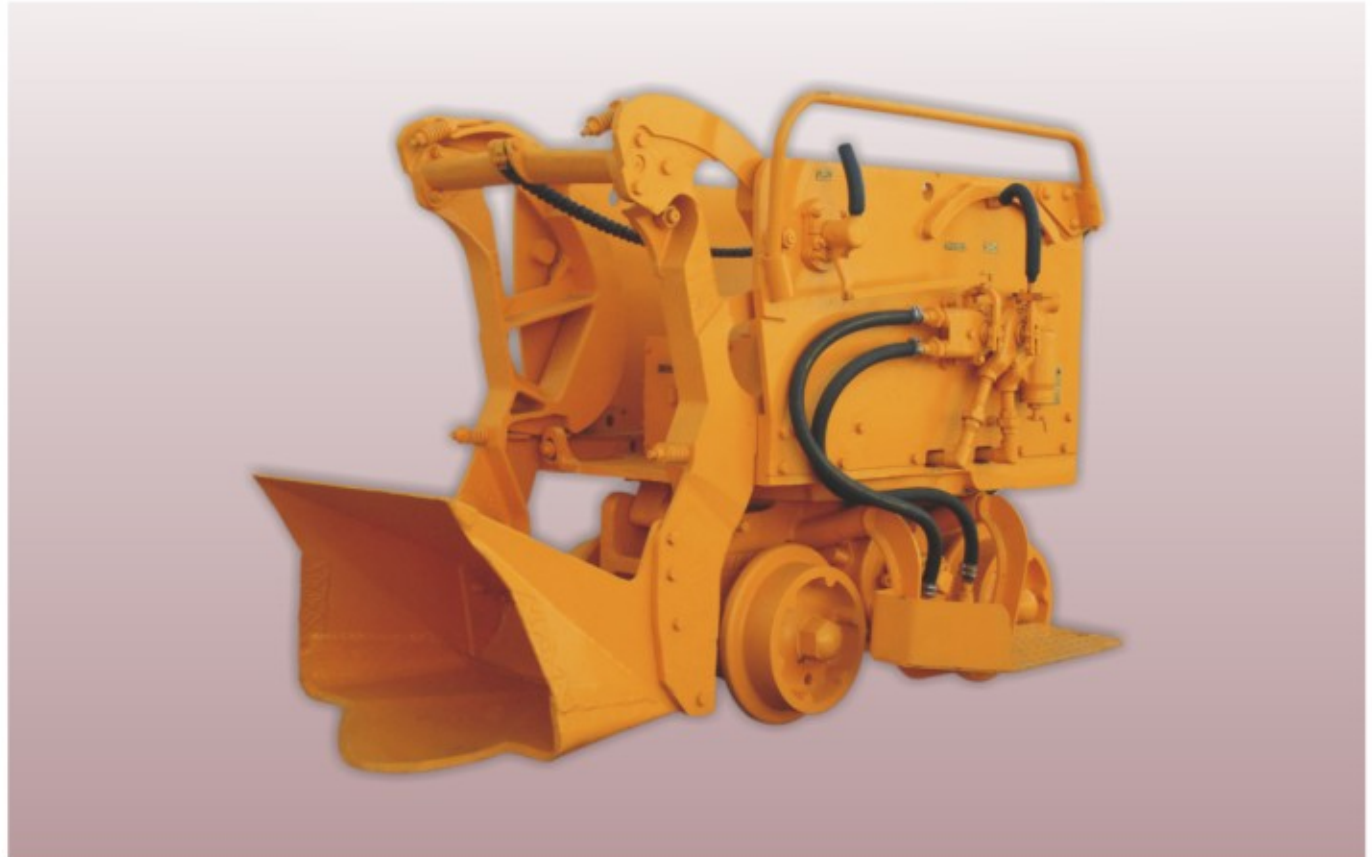




## Rail mounted air powered loader for small and medium sized headings



### FEATURES

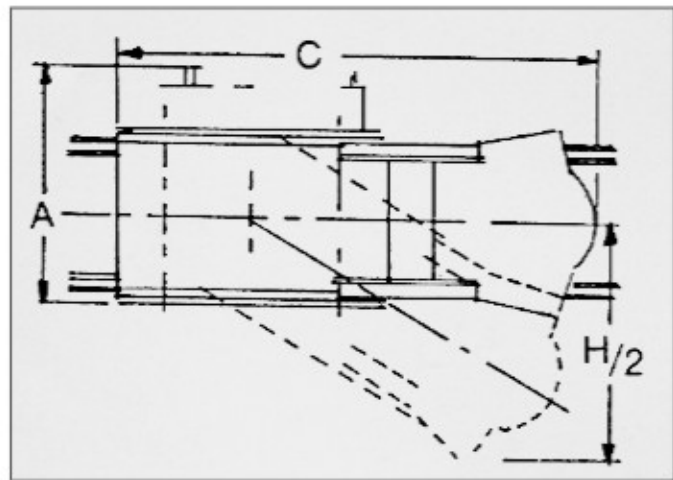
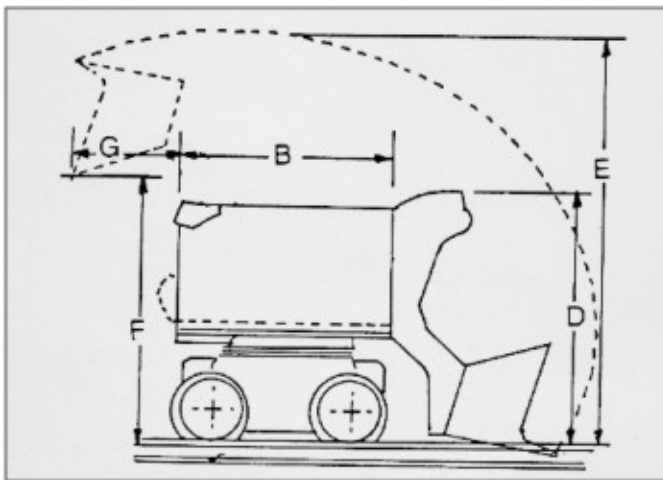
---

- Low centre of gravity.
  - Dependable rock loading.
  - Easy swinging of upper deck for side digging.
  - Wide tread wheels with deep flanges for extra stability.
  - Simple, self centred controls for easy and safe operation .
  - Selective heat treating gives long life without structural failures.
  - Every part is engineered for heavy duty continuous rock loading.
  - Power swing, as an option, for virtual pinpoint control of bucket position.
  - All main components are steel castings for extra strength and less maintenance.
  - For operation in gradient steeper than 1 in 6, special slope loading attachments are available.
-

# SPECIFICATIONS

A) Overall width (Caging)*	851 mm	Range of track gauge	457 - 1219 mm
Overall operating width *	1067 mm	Air pressure range	4.2 - 7.0 kg/cm <sup>2</sup>
B) Overall length (Caging)	1397 mm	Air hose size	25 - 32 mm
C) Overall length bucket down	2210 - 2286 mm	Complete loading cycle average	7 sec
D) Overall height bucket down	1422 - 1549 mm	Bucket capacity .	0.21 - 0.28 m <sup>3</sup>
E) Headroom height (depend on cars to be loaded)	2235 - 2515 mm	Loading capacity, average	0.99-1.41 m <sup>3</sup> /min
F) Discharge height of bucket	1321 - 1 727 mm	Motors (air)	2
G) Discharge distance Behind loader	457 - 711 mm	Capacity of car loaded efficiently	0.56-2.83 m <sup>3</sup>
H) Cleanup range Cleanup range With side plough	2286 - 2489 mm 2896 - 3107 mm	Weight	3266 Kg (approx.)
		Weight of heaviest piece	558 Kg (approx.)
		Air Consumption	300 cfm

\* Width varies according to track gauge. Actual width for specific track gauge on request.



The manufacturer reserves the right to amend/modify the specifications and/or design of this machine at any time without notice.  
The dimensions are of standard machine not fitted with any optional items.

For further details, please contact

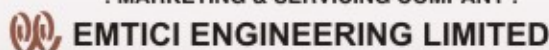


## EIMCO ELECON (INDIA) LIMITED

ANAND SOJITRA ROAD, VALLABH VIDYANAGAR 388120, GUJARAT, INDIA.

Tel. : (02692) 230502, 230602, 230902; Fax : (02692) 236506, Web : www.eimcoelecon.in, E-mail : mktgsales@eimco.elecon.com

: MARKETING & SERVICING COMPANY :



### BRANCH OFFICES

**ASANSOL**

Ph.: (0341) 2305901, Fax: 2302038

**CHENNAI**

Ph.: (044) 24349237, Fax: 24349643

**KOLKATA**

Ph.: (033) 24761861, Fax: 24761831

**BANGALORE**

Ph.: (080) 22260219, Fax: 22281834

**DHANBAD**

Ph.: (0326) 2306283, Fax: 2302320

**MUMBAI**

Ph.: (022) 22821315, Fax: 22870791

**BILASPUR**

Ph.: (07752) 247625, Fax: 247720

**JAMSHEDPUR**

Ph.: (0657) 2428138, Fax: 2428015

**NAGPUR**

Ph.: (0712) 2540771, Fax: 2554982

**NEW DELHI**

Ph.: (011) 23414339, Fax: 23709046

**SECUNDERABAD**

Ph.: (040) 27844748, Fax: 27848317